

# AD 4820

4 Channel Power Amplifier



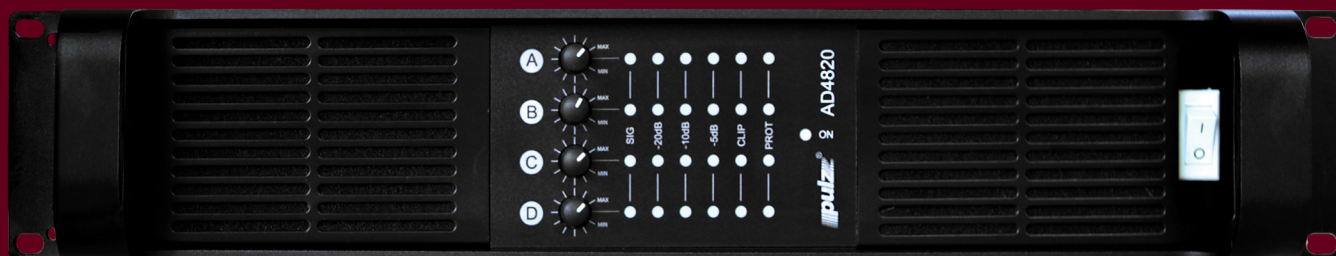
Pulz AD4820 is a four channel power amplifier designed and built for applications where sonic transparency and robust high power output capability are the prime criteria.

Built around an oversized classic toroidal power supply and ultra - linear Class AB output stage, Pulz AD4820 packs 2000 Watts of continuously deliverable clean audio in a 2U chassis.

This is made possible by the innovative dynamic tracking power controller (DPT) which fluidly adjusts the power supply rails to track the signal. As a result unwanted power dissipation in the output stages is minimized by almost 80%. The Pulz AD4820 remains relatively cool even when driving the most demanding low impedance subwoofer loads. This approach is superior to the standard SMPS based power supplies which are prone to failures and compromise the sonic purity due to interferences.

All the components used in the Pulz AD4820 are of the highest standard and from the most reputed manufacturers.

Channel independent soft clipping, level indicators, sensitivity selection, protection and high CMRR balanced input stages are the additional useful features which makes Pulz AD4820 outperform the standard amplifiers currently available.

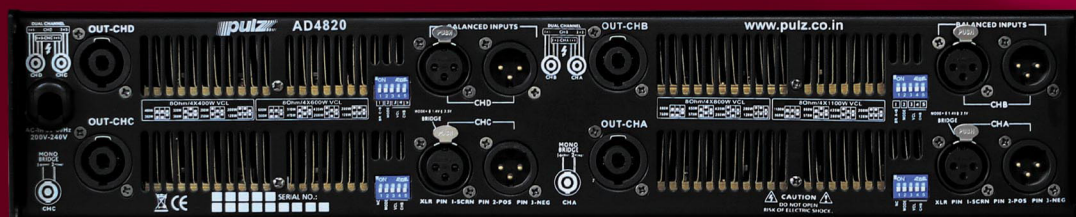


## Features :

- High efficiency DPT Technology
- Premium heavy duty Toroidal Transformer
- Highly sensitive CMRR balanced input stage
- Ultra low-load output capacity
- Channel independent power, Signal and clip LEDs

# AD 4820

4 Channel Power Amplifier



## Specifications

No. of Channels	4
Output Power (per channel)	4 X 480 Watts @ 8 $\Omega$ 4 X 820 Watts @ 4 $\Omega$ 2 X 1380 Watts @ 8 $\Omega$ in bridge mode 4 $\Omega$ bridge mode not recommended
Frequency response	30Hz - 20kHz, +0/-0.5dB with subsonic filter
Total Harmonic Distortion + Noise	<0.1%
Signal to Noise Ratio	110dB
Damping factor	>300
Crosstalk	<-60dB
Slew Rate	>10V/us
Full Power Input Sensitivity	1.5V
Input Impedance	20k $\Omega$ Balanced
Voltage Gain	32dB
Cooling	Air flow from front to rear
Protection	Fuseless short circuit protection, Ultrasonic and RF protection, Thermal protection
Load protection	Turn on delay, DC fault protection, ultrasonic limiting
Power requirement	230V AC 50Hz, $\pm$ 10%
Maximum Input Power	1200 Watts

## Connectors

Inputs	Balanced inputs XLR-F, Link XLR-M
Outputs	NL4 Speakon
Front panel	Power switch, Level control, Power indicator, Signal indicator, Clip, Protection
Rear panel	Stereo/Bridge switches, Sensitivity selection switch VCL selection switch

## Dimensions/Weight

Product dimensions	88 mm X 440 mm X 480 mm (3.47" X 17.3" X 18.9")
Net Weight	28.4kg ( 62.6 lb)
Packed Weight	32.2 kg (71 lb)

**Pulz Electronics Ltd.**

Plot 10 A, Kailashpati,  
2nd Floor Veera Desai Road,  
Andheri (West), Mumbai 400 053  
Tel no: 022 26732593  
Fax: 022 26732594  
E-mail: sales@pulz.co.in  
www.pulz.co.in